

Experimental Lake Erie Harmful Algal Bloom Bulletin

2010-006

08 July 2010

National Ocean Service

Great Lakes Environmental Research Laboratory

Last bulletin: 01 July 2010

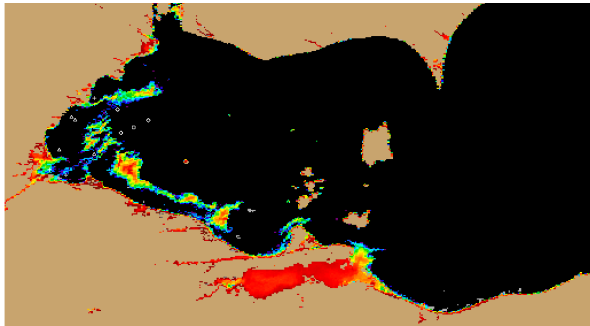


Figure 1. MERIS image from the European Space Agency. Imagery shows the spectral shape at 681 nm from July 05, where colored pixels indicate the likelihood of the last known position of the *Microcystis* spp. bloom (with red being the highest concentration). *Microcystis* spp. abundance data from shown as white squares (very high), circles (high), diamonds (medium), triangles (low) , + (very low) and X (not present).

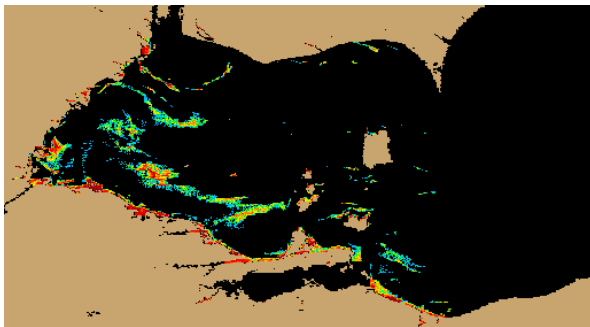


Figure 2. Nowcast position of *Microcystis* spp. bloom for July 08 using GLCFS modeled currents to move the bloom from the July 05 image.

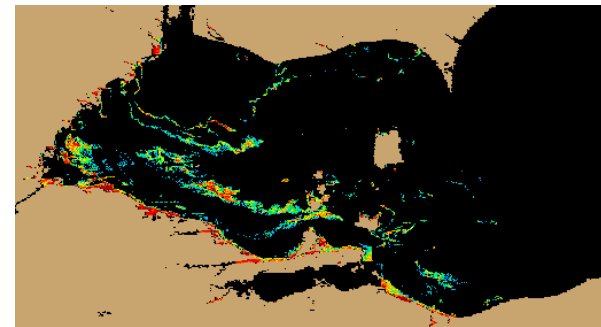


Figure 3. Forecast position of *Microcystis* spp. for July 11 using GLCFS modeled currents to move the bloom from July 05 image.

Please note:

- MERIS imagery was distributed by the NOAA CoastWatch Program and provided by the European Space Agency
- http://www.glerl.noaa.gov/res/Centers/HABS/lake_erie_hab/lake_erie_hab.html
- Cell counts were collected by the Great Lakes Environmental Research Laboratory
- The wind data is available through the National Data Buoy Center and the National Weather Service
- Modeled currents were provided through the Great Lakes Coastal Forecasting System

