

Experimental Lake Erie Harmful Algal Bloom Bulletin

National Centers for Coastal Ocean Science and Great Lakes Environmental Research Laboratory

26 September 2012; Bulletin 17

The bloom has likely diminished in the past week due to the recent cool temperatures. Please note this image is 7 days old, imagery over the past week has been cloudy. If a clear image becomes available later in the week a supplemental bulletin will be sent out. We forecast for a E-NE movement.

- Dupuy, Wynne, Briggs, Stumpf

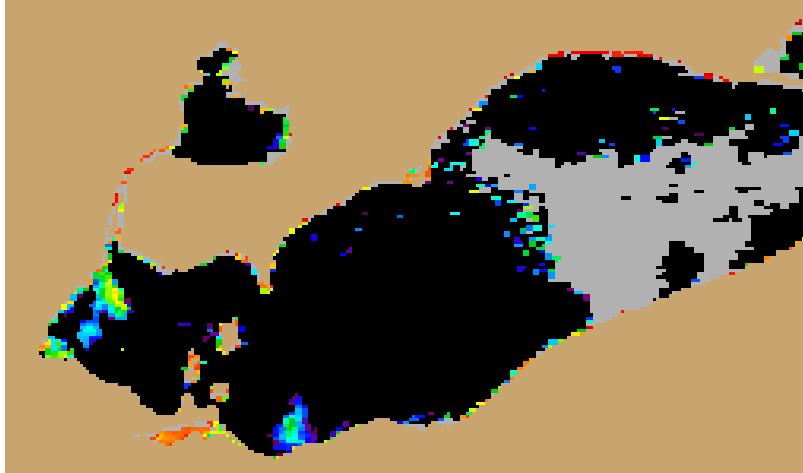


Figure 1. MODIS Cyanobacterial Index from 19 September 2012.

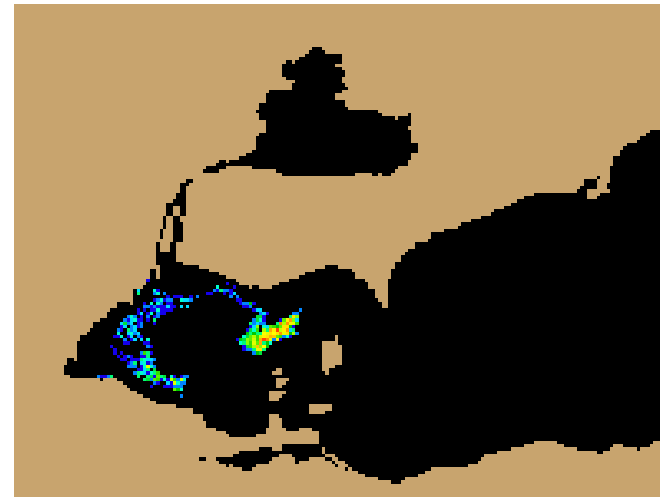


Figure 2. Nowcast position of bloom for 26 September 2012 using GLCFS modeled currents to move the bloom from the 19 September 2012 image.

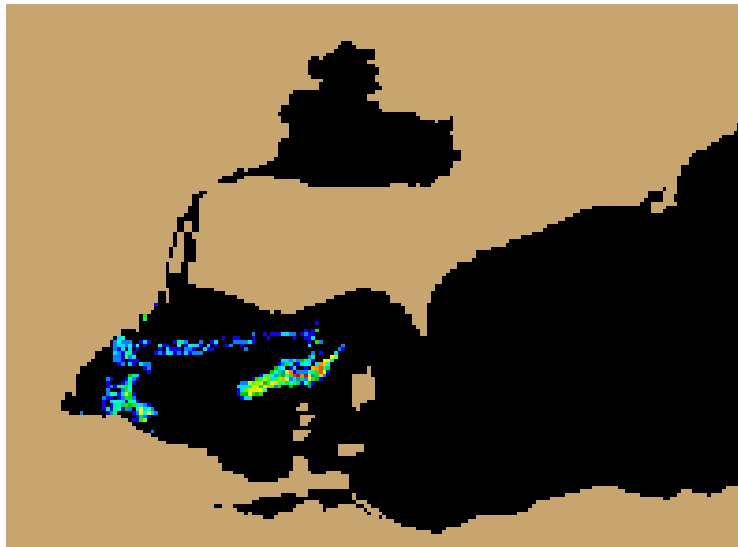
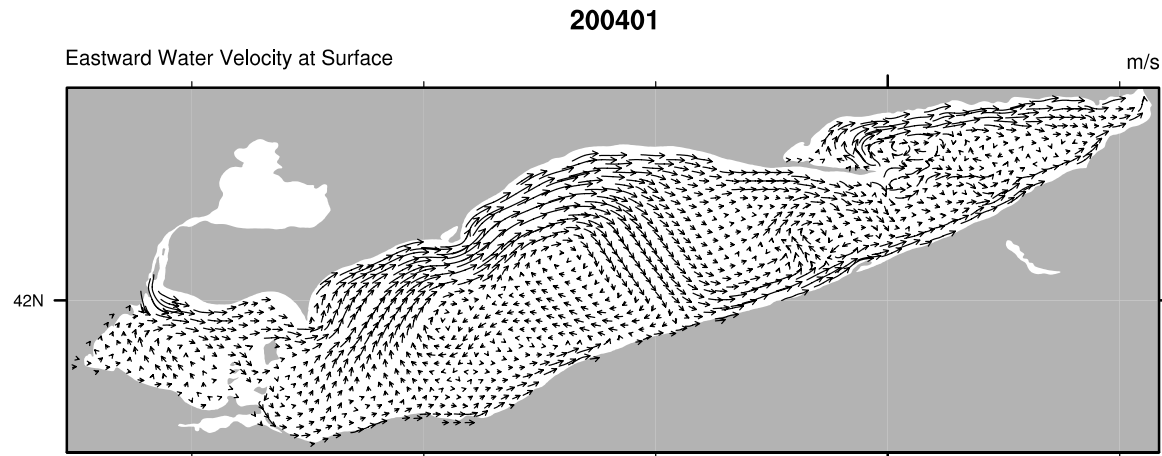
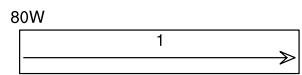


Figure 3. Forecast position of bloom for 29 September 2012 using GLCFS modeled currents to move the bloom from the 19 September 2012 image.



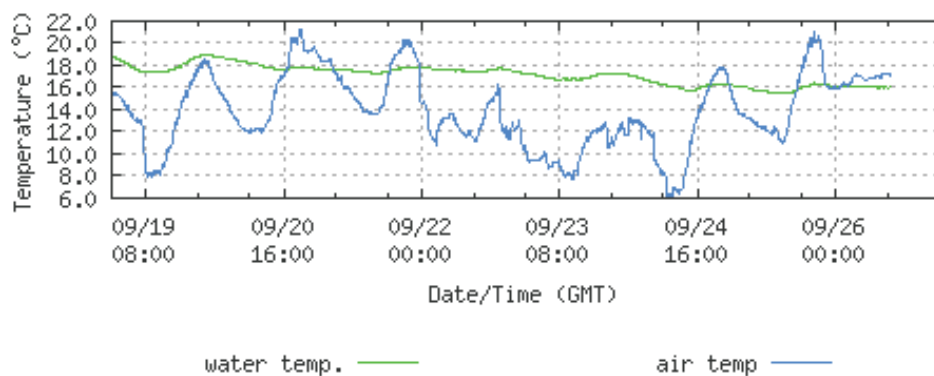
Averaged forecasted currents from Great Lakes Coastal Forecasting System over the next 72 hours.



To subscribe to this bulletin, go to :

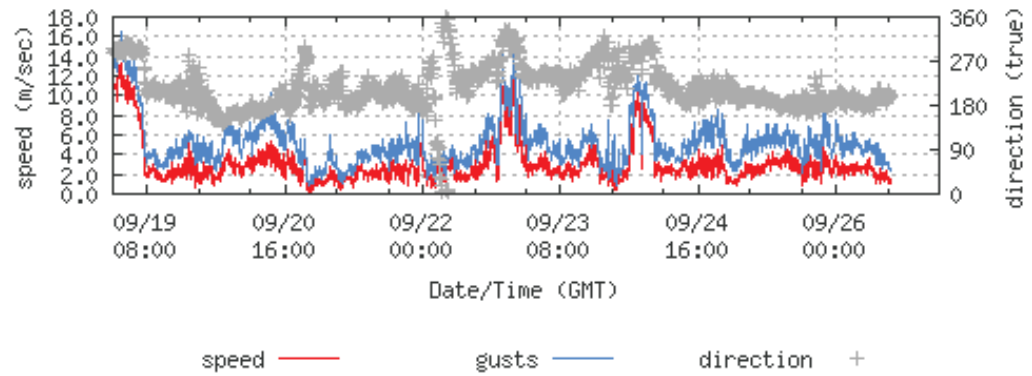
http://www.glerl.noaa.gov/res/Centers/HABS/lake_erie_hab/signup.php

NOAA/NOS/CO-OPS
Air/Water Temperature Plot
9063079 Marblehead, OH
from 2012/09/19 - 2012/09/26



Air and Water Temperature from Marblehead, OH. From: NOAA/Center for Operational Oceanographic Products and Services (CO-OPS).

NOAA/NOS/CO-OPS
Wind Speed/Gusts/Dir
9063079 Marblehead, OH
from 2012/09/19 - 2012/09/26



Wind Speed, Gusts and Direction from Marblehead, OH. From: NOAA/Center for Operational Oceanographic Products and Services (CO-OPS).

To subscribe to this bulletin, go to :

http://www.glerl.noaa.gov/res/Centers/HABS/lake_erie_hab/signup.php